



Docsinnovent Ltd, Ground Floor, Suite F,
Breakspear Park, Breakspear Way,
Hemel Hempstead HP2 4TZ, UK
Tel: +44 (0) 207 649 9071
Email: info@docsinnovent.com
www.docsinnovent.com

Instructions for use

Congratulations on using v-gel® – the product of choice for safe airway management during anaesthesia and resuscitation of veterinary patients.

PLEASE NOTE – These instructions are for guidance only. They are not intended to supersede best clinical practice employed by individual veterinary professionals. Use of the product should be with particular care in dogs with compromised airways.

v-gel® dog PRODUCT WARRANTIES and WARRANTY LIMITATIONS

General: Users of dog v-gel® products should carefully familiarise themselves with these instructions. More detailed information and training videos can be accessed on our website at www.docsinnovent.com.

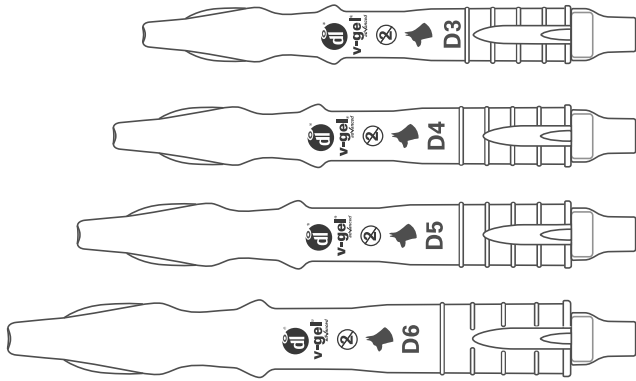
Important: Users must follow the recommendations as to handling and use of each dog v-gel® product. The product is designed to be used once only, after which it should be disposed of. Docsinnovent® and your supplier will accept no liability whatsoever where a user has failed to comply in all respects with these recommendations or where the use-by date has been exceeded.

Warranties, conditions and limitations:

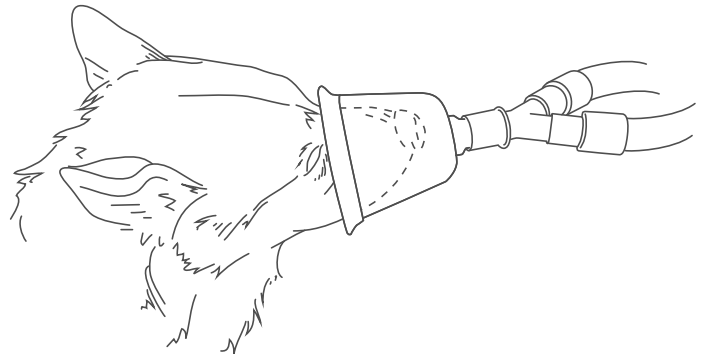
1. Docsinnovent Limited warrants that dog v-gel® products (a) conform to Docsinnovent's published specifications, (b) are free from manufacturing defects and (c) are fit for their intended use and purpose.
2. Users claiming a product failure during use must report such failure in writing to your supplier immediately upon discovery. Your supplier or Docsinnovent will require a user claiming product failure to specify details of the claim and certify compliance in all respects with the recommendations of use set out below. The product must be available for return and analysis.
3. Where a claim is accepted, your supplier will normally replace the product free of charge or alternatively at its option refund/credit the cost of the product.
4. You may be required to return the product the subject of your claim to your supplier.
5. Docsinnovent's and your supplier's liability in respect of any claim shall be limited to the invoiced price for the product and any postage refund, and they shall not be liable under any circumstances for consequential loss, damage or loss of profits in respect of any claim.

This table is intended to be a guide only. The right size v-gel® will be determined by the size and shape of a dog's pharynx, which varies depending on the breed, size and head and neck shape of the dog.

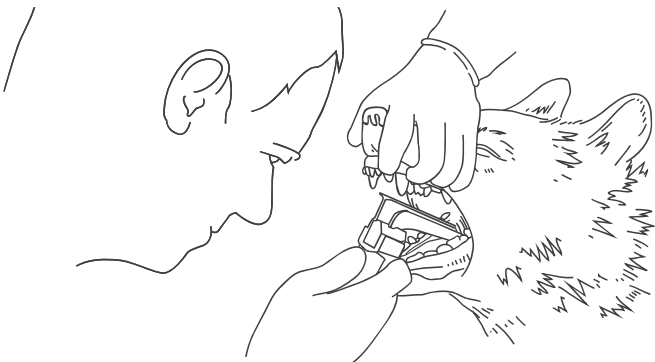
Head shape – Brachycephalic	Lean weight of dog	Head shape – Mesocephalic	Lean weight of dog	Head shape – Dolichocephalic	Lean weight of dog	Size/Product code
	6 – 10kg 13 – 22lb		4 – 7kg 9 – 15lb		2 – 4kg 4.5 – 9lb	D3 = D20003
	9 – 15kg 20 – 33lb		6 – 10kg 13 – 22lb		4 – 7kg 9 – 15lb	D4 = D20004
	14 – 20kg 30 – 45lb		9 – 15kg 20 – 33lb		6 – 10kg 13 – 22lb	D5 = D20005
	19 – 26kg 42 – 57lb		14 – 20kg 30 – 45lb		9 – 15kg 20 – 33lb	D6 = D20006



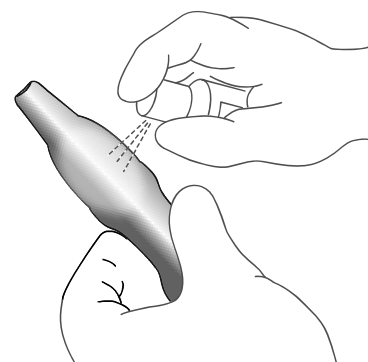
1 Choose the correct size for the dog according to the sizing chart above. The scale drawings on the v-gel® packaging may also assist in this process.



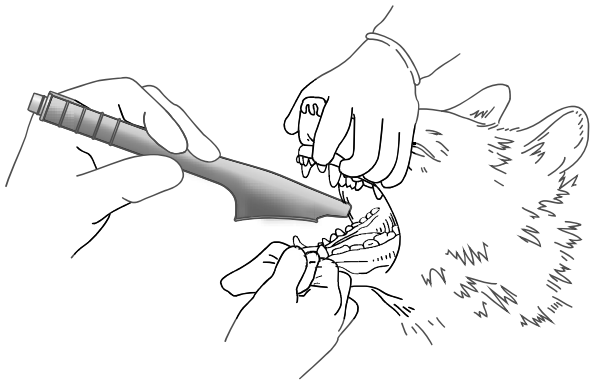
2 Ensure that the patient is pre-oxygenated and then fully anaesthetised to a surgical plane of anaesthesia (jaw relaxed, reflexes absent).



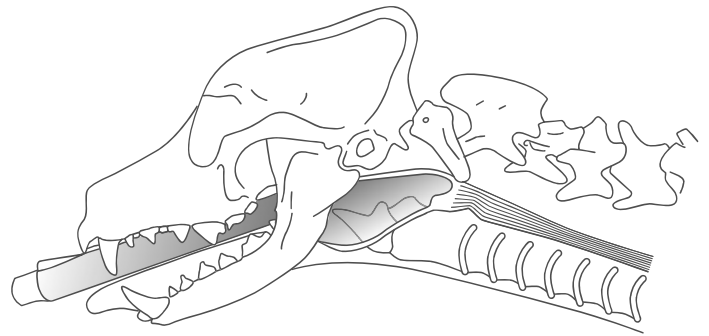
3 Withdraw the tongue and/or use a laryngoscope to examine the mouth and pharynx of the patient. Remove and foreign materials, and suction any excessive secretions that are seen.



4 Lubricate the v-gel® with Vetlube® or similar water-based lubricant. Shake the bottle well and ensure all surfaces of the v-gel® bowl are covered with lubricant, without obstructing the airway channel.



5 Holding the patient's tongue, insert the v-gel® by advancing gently along the hard palate with the open airway channel facing ventrally, towards the tongue.



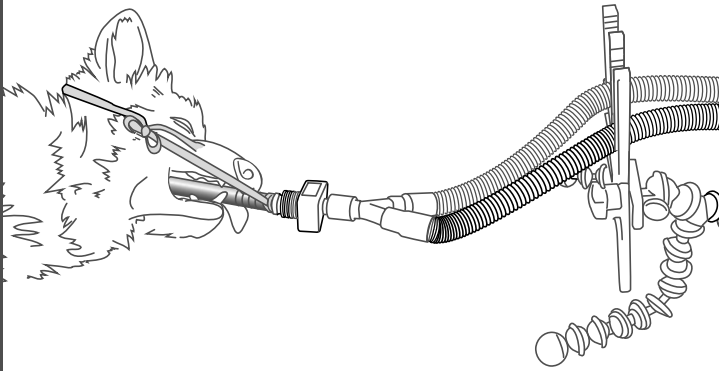
6 Gently advance the v-gel® into the pharynx. The v-gel will be felt dropping into position.

7 The v-gel® should fit snugly in place with no rotational ability.

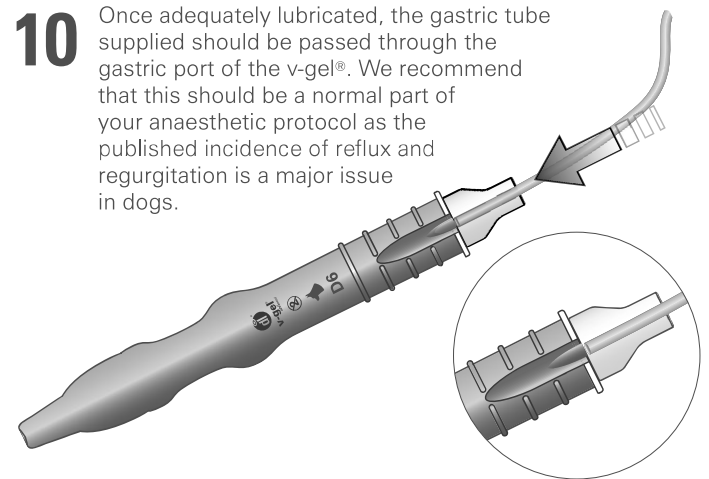
Confirmation of correct placement should be determined by testing for a patent airway (for example, with a capnograph, gentle positive pressure ventilation or a respiration monitor).



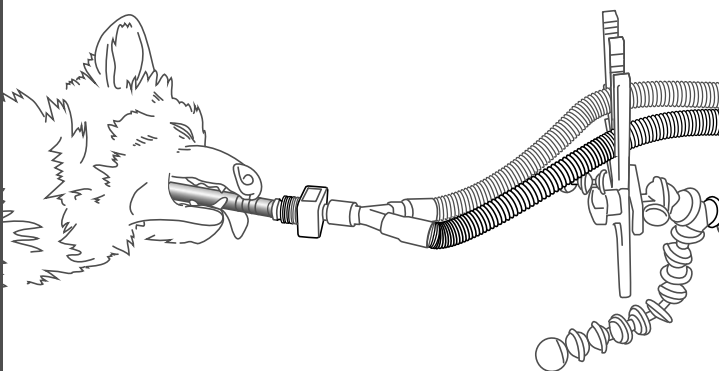
8 The v-gel® should be secured into place by tying a gauze fabric strip onto the ring features around the device or the connector itself and around the back of the patient's head, thus allowing no rostral movement of the v-gel®. The v-gel® should be removed from the circuit whilst the patient is being repositioned or rotated.



9 Once the v-gel® is secure, the weight of the anaesthetic circuit should be supported. A D-grip® tube holder is a suitable device to assist.



10 Once adequately lubricated, the gastric tube supplied should be passed through the gastric port of the v-gel®. We recommend that this should be a normal part of your anaesthetic protocol as the published incidence of reflux and regurgitation is a major issue in dogs.



11 Once the procedure is completed, suction the gastric tube and then remove it. Leave the dog to recover whilst connected to a source of oxygen. The gauze can be untied from the dog's head.



12 Once normal reflexes (such as swallowing reflex or ear flick) have returned, remove the v-gel® by gently pulling it out of the mouth. Recycle or dispose of the v-gel® according to local rules.