

8. RENASYS[®] accessories



RENASYS Adhesive Gel Patch

The RENASYS Adhesive Gel Patch is designed for use with the existing Smith & Nephew NPWT dressing kits. RENASYS Adhesive Gel Patch is a sterile, single use dressing. It is intended for fixation of drainage tubing and is a useful accessory to help improve seals, especially in challenging anatomical areas or with challenging wound and skin conditions. The Gel Patch is made of an adhesive hydrogel sheet. This adhesive Gel Patch can be used as a replacement to Ostomy Paste. The wear time is 72 hours.

Component list; 5 boxes per case

10 gel patches per box – 4in x 2.8in (10cm x 7cm)

Double sided silicone adhesive hydrogel

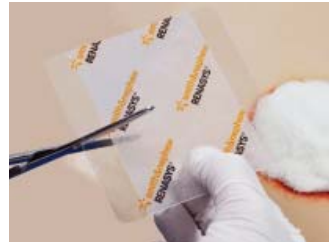
Application Tips

- The RENASYS Adhesive Gel Patch is intended to be used on intact skin. It is primarily used to improve seals and avoid leaks.
- Used under the RENASYS Transparent Film, the Gel Patch can be cut and placed around the periwound area prior to sealing with the RENASYS Transparent Film.
- It may be easier to cut or shape the RENASYS Gel Patch prior to removing the adhesive backing.
- When using gloves, remove one side of the adhesive backing and apply to the skin. Remove the remaining panel once placed.
- The Gel Patch has absorbent properties, which means it has the ability to absorb reasonable amounts of fluid. Depending on the wound output and conditions, it is possible to overwhelm the dressing if enough fluid comes in contact. More frequent dressing changes may be needed as directed in the Instructions for Use for RENASYS-G Gauze or RENASYS-F Foam Dressing Kits.
- The adhesive is designed to release off the skin with little or no adhesive remaining. If some adhesive remains utilize Smith & Nephew's REMOVE[®] or another appropriate adhesive remover.
- Use gentle pressure to apply the RENASYS Adhesive Gel Patch to the dressing or skin site.

RENASYS[◇] Adhesive Gel Patch application technique

Creating a seal around drain tubing or to lift drain off skin

Cut the Gel Patch into strips in a direction that allows the backing removal ends to remain accessible.



Remove the backing on one side only and apply to skin with gentle pressure.



Remove the remaining backing and apply tubing.



Apply another strip using the same technique over the top of the tubing.

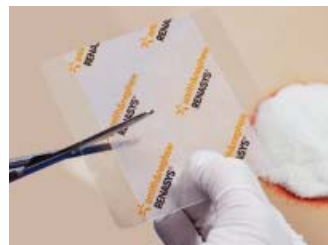


Ensure that the Gel Patch completely surrounds the tubing to create a seal and remove the backing. Continue with normal dressing application.



Creating a seal in challenging anatomical areas

Cut the Gel Patch into strips in a direction with backing removal ends accessible.



Remove the backing on one side only and apply to skin with gentle pressure. Ensure the fold is addressed first.



Remove the backing. Apply Transparent Film over the foam or gauze interface and the Gel Patch to create a seal and finish the dressing.

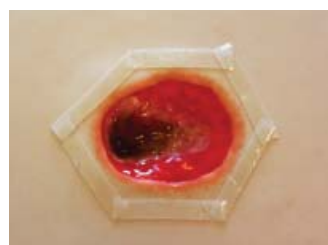


Creating a seal around wound margins

Cut Gel Patch into several strips. Remove the backing on one side only and apply to skin with gentle pressure. Remove the backing.



Continue to apply Gel Strips around wound margins ensuring that the strips overlap to create a good seal. Continue with normal dressing application.



Creating a seal in challenging areas of the foot

Cut the Gel Patch into strips in a direction with backing removal ends accessible.

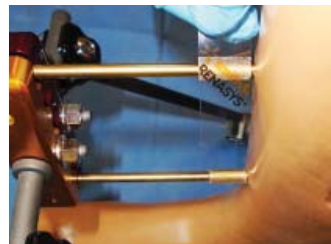


Remove the backing on one side only and apply to skin with gentle pressure. Remove the backing. Apply Transparent Film over the foam or gauze interface and the Gel Patch to create a seal and finish the dressing.



Creating a seal around external fixation pins

Cut Gel Patch into strips and to a length that will cover the pin circumference. Remove the backing on one side only. Apply the lead end of the Gel Strip to the base of the pin. Gently apply pressure to the backing to ensure initial adhesion to the pin. Wrap the Gel Strip around the pin while simultaneously removing the backing.



Apply Transparent Film over the foam or gauze interface and the Gel Patch. Pinch the film at the Gel Patch/pin interface to create a seal and finish the dressing.

