

BD PhaSeal is a closed-system drug transfer device that mechanically prohibits the transfer of environmental contaminants into the system and the escape of hazardous drug aerosols or vapours into the environment.^{1,2}

BD PhaSeal – the logical choice

- **Prevents the escape of hazardous aerosols and vapours**

An airtight pressure equalisation chamber contains drug aerosols and vapours within the system.

- **Prevents leakage throughout the entire drug transfer process**

The BD Phaseal dry double membrane technology prevents exposure when connecting and disconnecting during preparation and administration.

- **The effectiveness of BD PhaSeal has been studied and validated by 30 independent, published studies.****

Professionalism through scientific evidence gives BD PhaSeal users a platform of trust.

- **A universally compatible, easy to use system**

The simple and easily performed push-turn-push motion enhances confidence when transferring hazardous drugs.

For more information, call BD on
Australia 1800 656 100 or
New Zealand 0800 572 468

** Full supporting literature available upon request.

1. Sessink P, Connor T, Jorgenson J, Tyler T. Reduction in surface contamination with antineoplastic drugs in 22 hospital pharmacies in the US following implementation of a closed-system drug transfer device. *J Oncol Pharm Practice*. 2010; 17(1): 39-48.
2. Siderov J, Kirsa S, McLauchlan R. Reducing workplace cytotoxic surface contamination using a closed-system drug transfer device. *J Oncol Pharm Practice*. 2010; 16(1): 19-25.
3. NIOSH Alert: preventing occupational exposures to antineoplastic and other hazardous drugs in health care settings 2004. U.S. Department of Health and Human Services, Public Health Service, Centers for Disease Control and Prevention, National Institute for Occupational Safety and Health, DHHS (NIOSH) Publication No 2004-165. www.cdc.gov/niosh/docs/2004-165 (accessed March 9 2012)



Australia: Becton Dickinson Pty Ltd,
4 Research Park Drive,
Macquarie University Research Park,
North Ryde, NSW 2113
Toll Free Telephone: 1800 656 100

New Zealand: Becton Dickinson Limited,
8 Pacific Rise,
Mt Wellington, Auckland,
Toll Free Telephone: 0800 572 468
www.bd.com.anz

BD, BD Logo and all other
trademarks are the property of
Becton, Dickinson and Company.
©BD January 2012
www.bd.com/anx
ANZMED182



Helping all people
live healthy lives

BD PhaSeal™
Proven safe* handling
of hazardous drugs^{1,2}

* Meets the NIOSH definition of a closed system drug transfer device³

BD PhaSeal **protects**
your staff from
hazardous drug exposure



BD PhaSeal has three primary components: the Injector, the Connector and the Protector



1. Injector: syringe safety device

The Injector Luer Lock attaches to a standard syringe or IV line for a dry, leakproof connection during drug preparation and administration. The Injector Luer Lock ensures a closed drug transfer by means of tightly sealed, double elastomeric membranes.

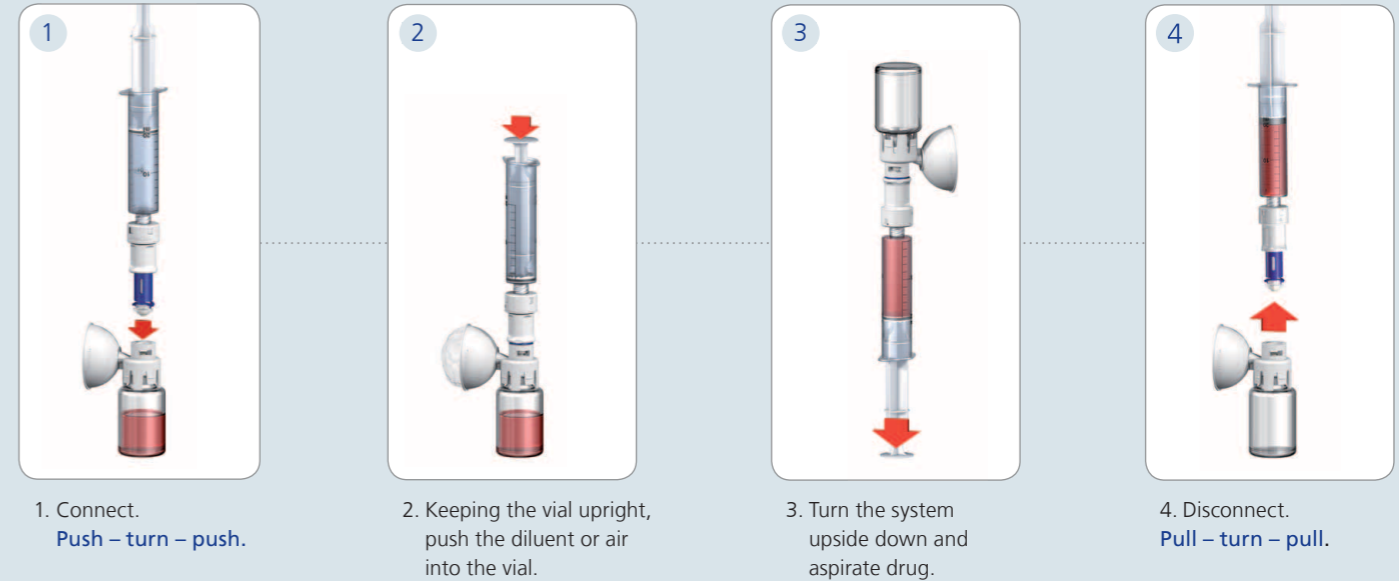
2. Connector: access port

The Connector is the BD PhaSeal access port for closed administration of hazardous drugs during injections and infusions. It attaches to standard Luer Lock ports and seals these thanks to the unique membrane design.

3. Protector: drug vial access device

The Protector is a pressure equalisation device that is permanently attached to the vial and is used in the preparation of either powder or liquid drugs. The Protector provides airtight safety thanks to the sealed expansion chamber and dry leakproof connections. It effectively ensures neutral air pressure during the entire preparation procedure.

Preparing drug from vial to syringe...



...to IV-bag



...to patient

